

Using Operations Management Interface to Integrate OEM Equipment

GMOEM-04

Dallas, TX

September 11, 2018

Michael Grasley
Hai Po Yang



#AVEVAWorld  AVEVAGroup  AVEVA

Copyright © 2018 AVEVA Group plc and its subsidiaries. All rights reserved.

YOUR DIGITAL TRANSFORMATION: AN EXECUTION ROADMAP



Project Background Bakery

Greenfield Bakery



KwikTrip

- ▲ Vertically Integrated Convenience Store Operator
- ▲ Produce 80% Own Food
- ▲ Runs Own Distribution
- ▲ 650 Stores, +40-50 per Year
- ▲ 7 Million Guests each Week
- ▲ Replenish Every Store Every Day



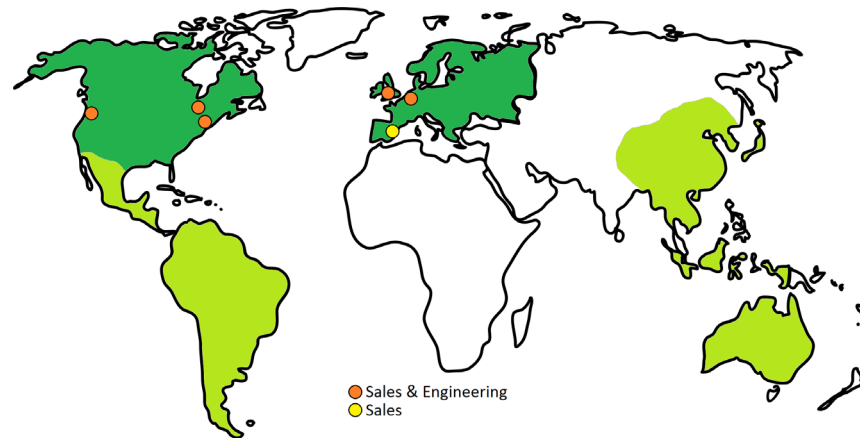
Copyright © 2018 AVEVA Group plc and its subsidiaries. All rights reserved.

Callisto Integration

Endorsed Systems Integrator

AVEVA WORLD
CONFERENCE

- ▲ 200 People, 4 Offices
- ▲ 30 Years in Business
- ▲ Automation, Controls, SCADA
- ▲ Model-Driven MES
- ▲ IoT
- ▲ Manufacturing Consulting
- ▲ F&B, CPG
- ▲ A&D



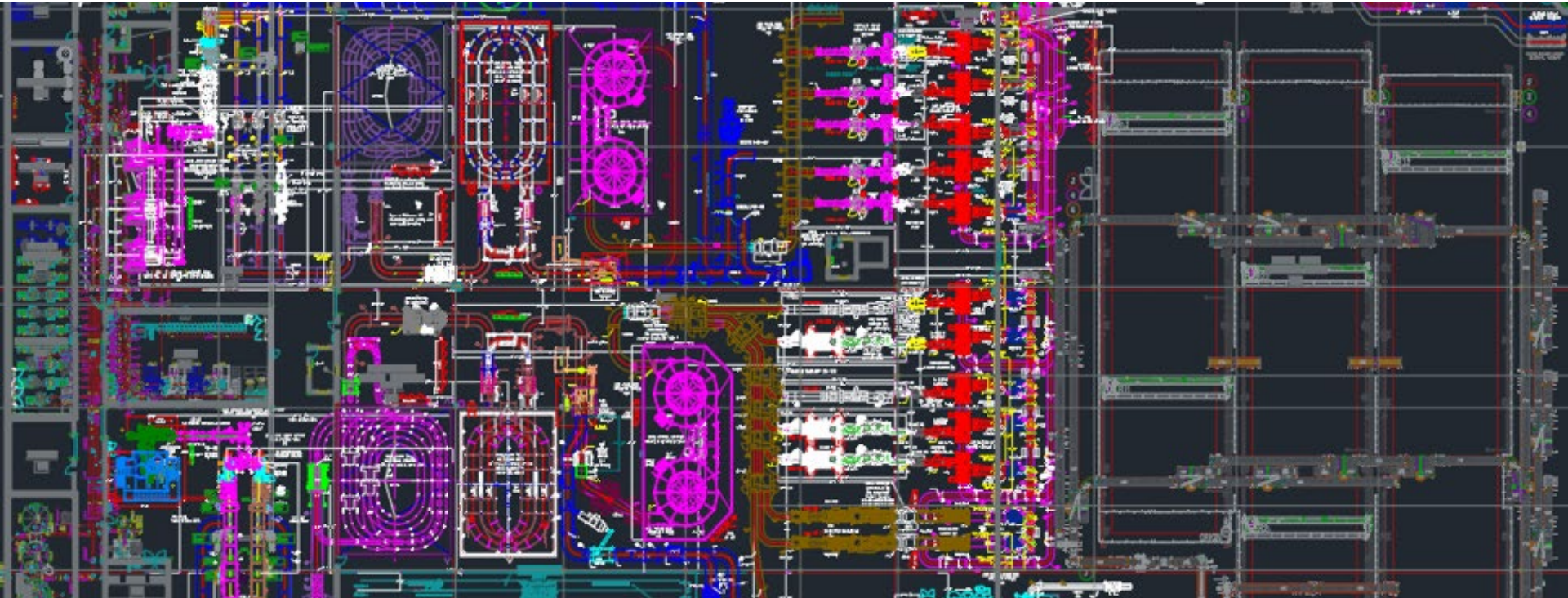
Copyright © 2018 AVEVA Group plc and its subsidiaries. All rights reserved.

YOUR DIGITAL TRANSFORMATION: AN EXECUTION ROADMAP

Project Information

200,000 Square Foot Bakery

AVEVAWORLD
CONFERENCE



YOUR DIGITAL TRANSFORMATION: AN EXECUTION ROADMAP

Operational Goals

Digitization for Effectivity

- ▲ Support Millennial Workforce
- ▲ Small Shop-floor Workforce, High Production Rates
 - ▲ Integrated View of All Aspects of Production
 - ▲ Rapid Problem Resolution Critical
 - ▲ Rapid Product Changeover
- ▲ Need for Large Volumes of Data
 - ▲ Food Safety & Compliance
 - ▲ Continuous Improvement
 - ▲ Data Collection Automated

Challenges

Systems with Diverse Data

- ▲ Some Re-purposed Equipment from Existing Facilities
- ▲ 120 Pieces of OEM Equipment
 - ▲ Different Suppliers
 - ▲ Different Standards & Designs
 - ▲ Different Data Models (if any)
 - ▲ Different Interfaces
- ▲ Consistent Data is a Requirement
 - ▲ How to achieve with minimal impact on vendors?

OMI and System Platform

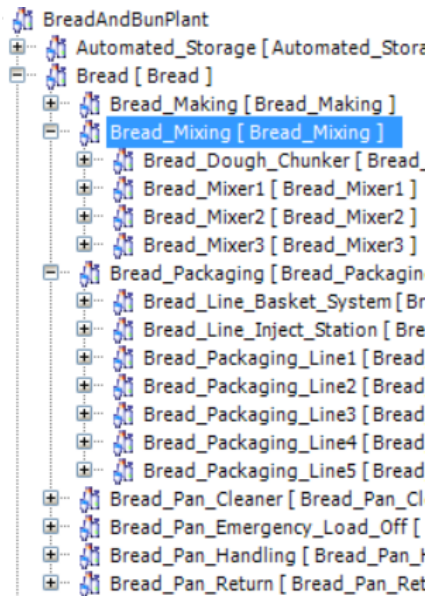
System Platform Templating

- ▲ Modelling Approach to Normalize OEM Data into Common Data Model
 - ▲ Standard UDTs for
 - ▲ Alarms
 - ▲ Critical Control and Process Points
 - ▲ Maintenance data
 - ▲ Standardized downtime reason codes (PackML based)
 - ▲ Standardized data transaction mechanisms to ensure data integrity
- ▲ Design approach to minimize PLC code impact to OEM Vendors

OMI and System Platform

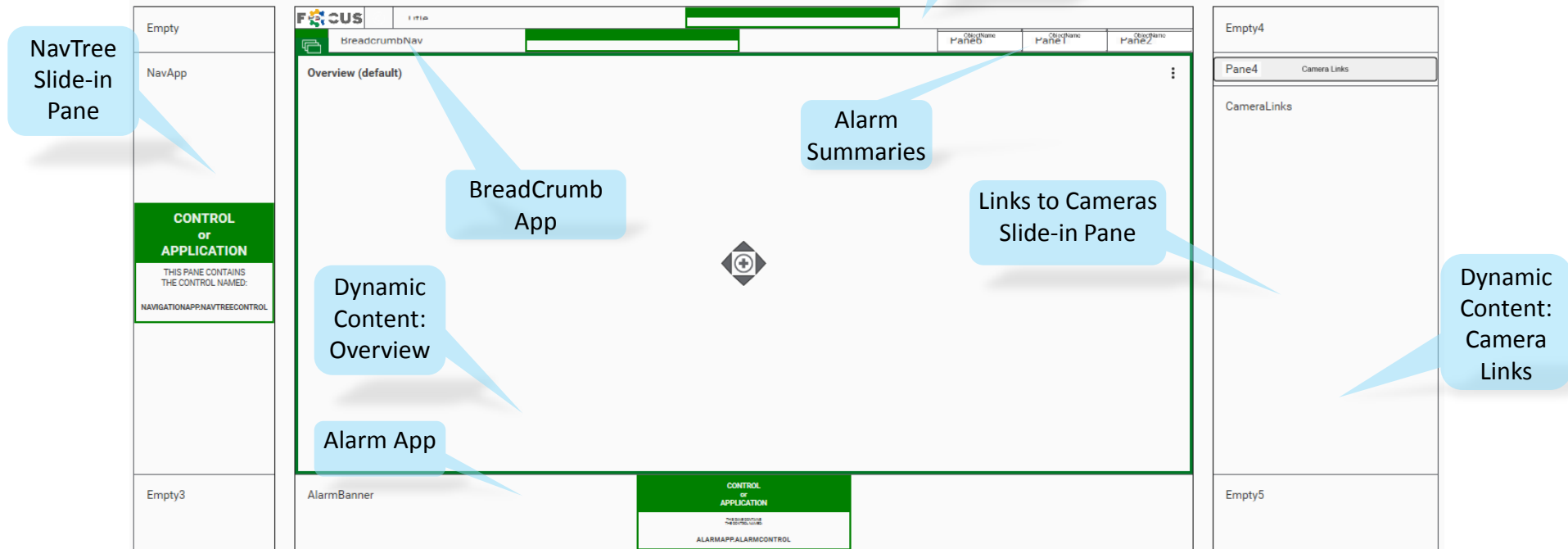
OMI

- ▲ Plant Model Linked Content:
 - ▲ All displayed content relative to your current location in the plant model.
- ▲ OMI Screen Profiles and Layouts:
 - ▲ Faster application development
 - ▲ Ensure consistency / standardization across the application
 - ▲ Separation of content vs. presentation: Allows for display across several different hardware
 - ▲ Multi-vendor collaboration
- ▲ OMI ArchestrA Apps: Pre-built configurable applications



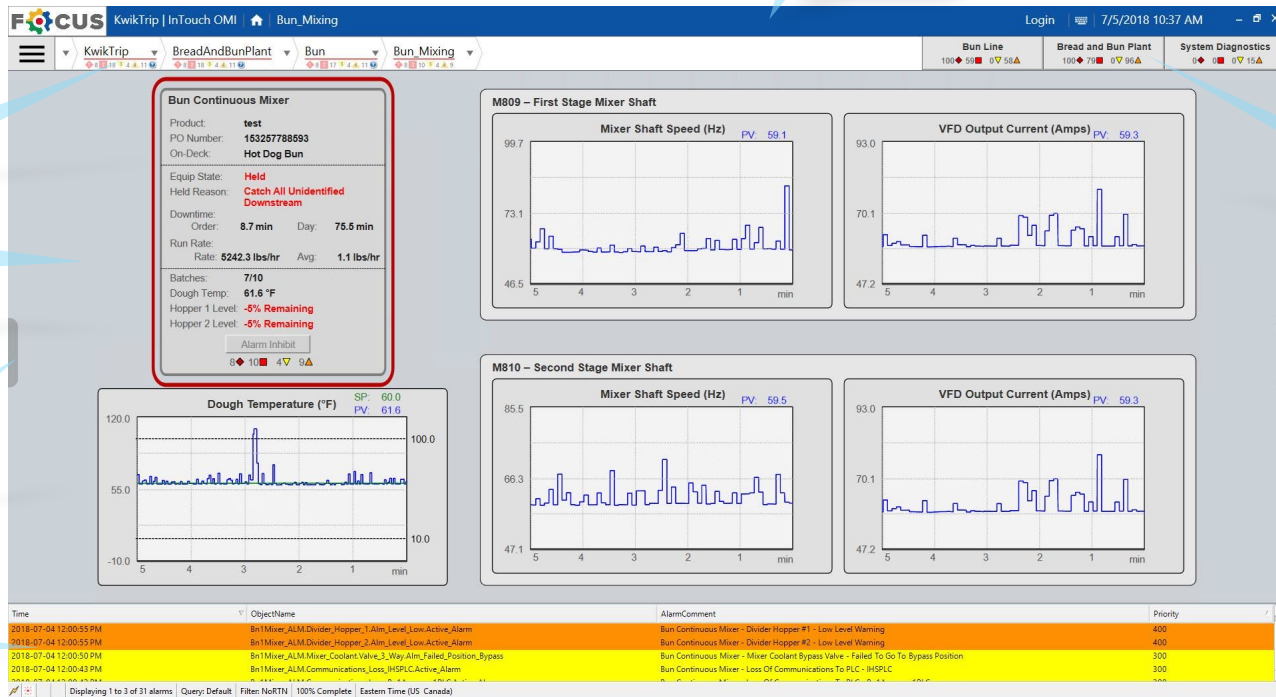
OMI and System Platform

OMI – Screen Layouts



OMI and System Platform

OMI – Screen Layouts



BreadCrumb
App

Dynamic
Content:
Overview

NavTree
Slide-in
Pane

Alarm App

TitleBar
App

Alarm
Summaries

Cameras links
Slide-in Pane –
navigates to
Camera
overviews

OMI and System Platform

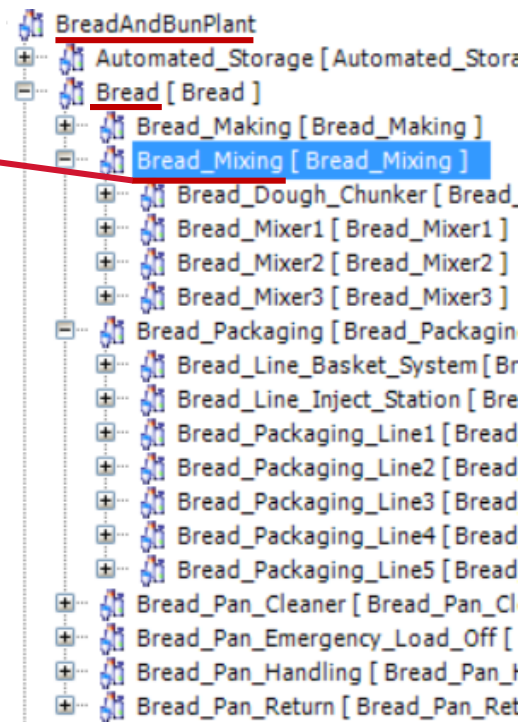
BreadCrumb App

AVEVA WORLD
CONFERENCE

The screenshot shows the BreadCrumb App interface. At the top, there is a navigation bar with the FOCUS logo and a breadcrumb trail: KwikTrip | InTouch OMI | Bread_Mixing. Below the navigation bar, there is a red-bordered box containing the breadcrumb trail: KwikTrip > BreadAndBunPlant > Bread > Bread_Mixing. The main content area displays the status of Bread Mixer 1. The status is shown in a grey box with a red 'Z' icon in the top right corner. The status details are as follows:

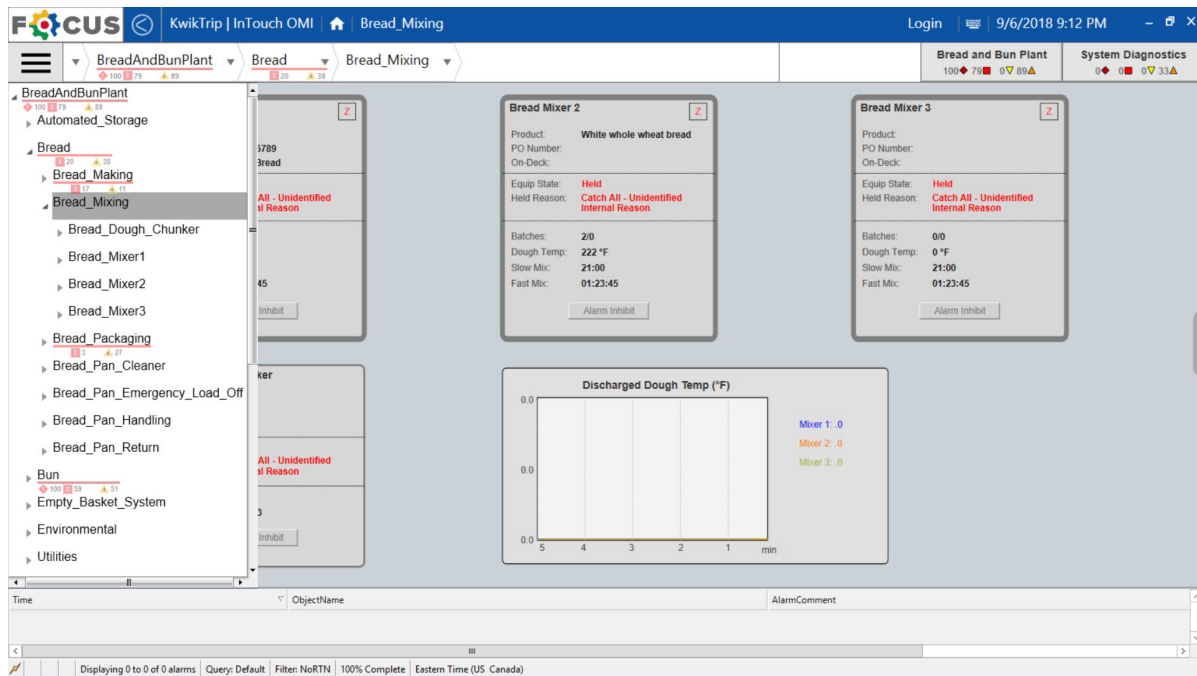
Product:	Bread
PO Number:	123456789
On-Deck:	More Bread
Equip State:	Held
Held Reason:	Catch All - Unidentified Internal Reason
Batches:	5/7
Dough Temp:	84 °F
Slow Mix:	21:00
Fast Mix:	01:23:45

At the bottom of the status box, there is an 'Alarm Inhibit' button. To the right of the status box, there is a list of equipment names: Bread_Dough_Chunker, Bread_Mixer1, Bread_Mixer2, Bread_Mixer3, and Bread_Mixer4.



OMI and System Platform

NavTree App



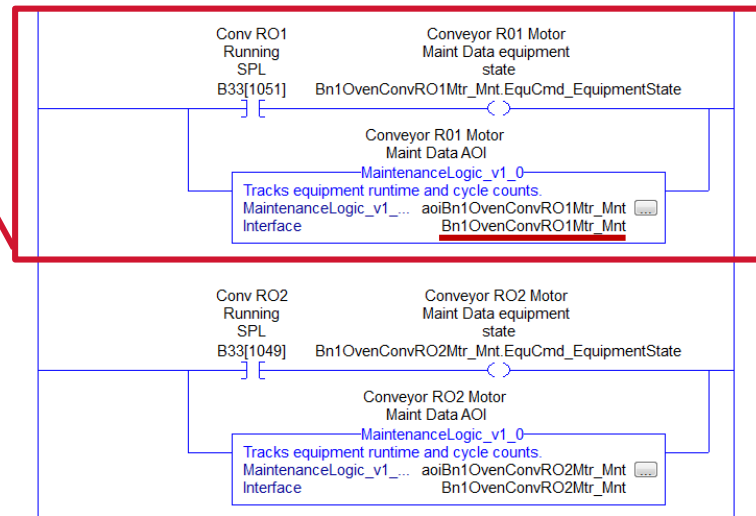
OMI and System Platform Content Presenter

FOCUS | KwikTrip | InTouch OMI | CallistoV

MaintenanceData > BunOven

Motor Name	Status	Cycle Count	Runtime (hrs)	Action
Bun Oven Conveyor R01 Motor	ON	1	0.2	Reset
Bun Oven Conveyor R02 Motor	ON	1	0.2	Reset
Bun Oven Conveyor R03 Motor	ON	1	0.2	Reset
Bun Oven Conveyor R04 Motor	ON	1	0.2	Reset
Bun Oven Conveyor R05 Motor	OFF	2	0.2	Reset
Bun Oven Conveyor R06 Motor	ON	1	0.2	Reset
Bun Oven Conveyor R07 Motor	ON	1	0.2	Reset
Bun Oven Conveyor R08L Motor	ON	1	0.2	Reset
Bun Oven Conveyor R08R Motor	ON	1	0.2	Reset

Bn1OvenConvR01Mtr_Mnt
Bn1OvenConvR02Mtr_Mnt
Bn1OvenConvR03Mtr_Mnt
Bn1OvenConvR04Mtr_Mnt
Bn1OvenConvR05Mtr_Mnt
Bn1OvenConvR06Mtr_Mnt
Bn1OvenConvR07Mtr_Mnt
Bn1OvenConvR08LMtr_Mnt
Bn1OvenConvR08RMtr_Mnt



OMI and System Platform

Future Proofing

- ▲ InTouch + System Platform Was Viable – Why OMI?
 - ▲ Future Proof
 - ▲ Reduced Engineering Costs
 - ▲ Higher First-Pass Application Quality
 - ▲ Greenfield Site; No Legacy Approach in Place

- ▲ OMI Benefits
 - ▲ Ability to adopt new ArchestrA Apps to bring better contextual data to the operator in a common environment
 - ▲ CMMS, LIMS, MES
 - ▲ Simpler over all software setup to maintain
 - ▲ Easier to modify and expand
 - ▲ Future support for mobility

Copyright © 2018 AVEVA Group plc and its subsidiaries. All rights reserved.

Question

OMI for OEM Equipment Integration



Michael Grasley
VP Technology & Development
michael.grasley@callistointegration.com

#AVEVAWorld

 AVEVAGroup

 AVEVA

AVEVA WORLD North America

CONFERENCE

This presentation may include predictions, estimates, intentions, beliefs and other statements that are or may be construed as being forward-looking. While these forward-looking statements represent our current judgment on what the future holds, they are subject to risks and uncertainties that could result in actual outcomes differing materially from those projected in these statements. No statement contained herein constitutes a commitment by AVEVA to perform any particular action or to deliver any particular product or product features. Readers are cautioned not to place undue reliance on these forward-looking statements, which reflect our opinions only as of the date of this presentation. The Company shall not be obliged to disclose any revision to these forward-looking statements to reflect events or circumstances occurring after the date on which they are made or to reflect the occurrence of future events.

#AVEVAWorld

 AVEVAGroup

 AVEVA